



Windows® Home Server

HumuHumu
TECHNOLOGY FOR EVERYONE

***Installation Guide for your
Windows® Home Server 2011 system***

An installation guide to getting your new HumuHumu Home Server up and running.

Table of Contents

Quick Start	4
Unboxing and powering on.....	4
First time access via webpage.....	5
Keyboard and country settings	6
Verify date and time.....	7
Microsoft Software License Terms	8
Product Key	9
Personalize your Server.....	10
Updating and preparing your server.....	12
Connecting to your home server.....	13
Factory Reset	14
Factory reset with external USB drive.....	14
Factory reset without external USB drive	15
Further Help	16
AWIECO Products	17
DriveInfo.....	17
RemoteLauncher	18
Resources	19
Public Resources.....	19
Windows Home Server blog:.....	19
Windows Home Server public forums:.....	19
Installation Instructions:	19

Quick Start

HumuHumu would like to thank you for purchasing our Home Server 2011 product. We're really excited by what Microsoft has to offer with Windows Home Server 2011 and we think you'll love it as well. Below are some simple steps that you need to follow first before you can start using your new Home Server.

Unboxing and powering on

1) Unbox your Home Server. Inside you should find:

- 1 x Home Server
- 1 x Power cable
- 1 x Network Cable
- 1 x USB memory stick
- 1 x Microsoft Getting Start Guide
- 1 x HumuHumu Quick Start Guide
- 1 x Official Microsoft Server 2011 DVD and Restore CD

Optional (you may have purchased these items as well)

- 1 x UPS Power Supply
- 1 x 2TB External HDD
- 1 x dLAN AV Plus Starter kit Network Adapters

2) Plug the network cable into your Home Server and the other end into your router. If you have purchased the optional dLAN network adapters, we suggest setting up and configuring the server first before connecting it to the dLAN adapters.

3) Plug the power cable into the Home Server. Ensure the power supply is switched on at the rear of the Home Server. The Home Server should power on automatically. If it does not, press the power button on the front (larger of the 2 buttons). If you have purchased the optional UPS power supply, please follow the UPS instructions for how to connect your Home Server to it. Once the Home Server is setup and configured, you will find a copy of the UPS software on the shared software folder.

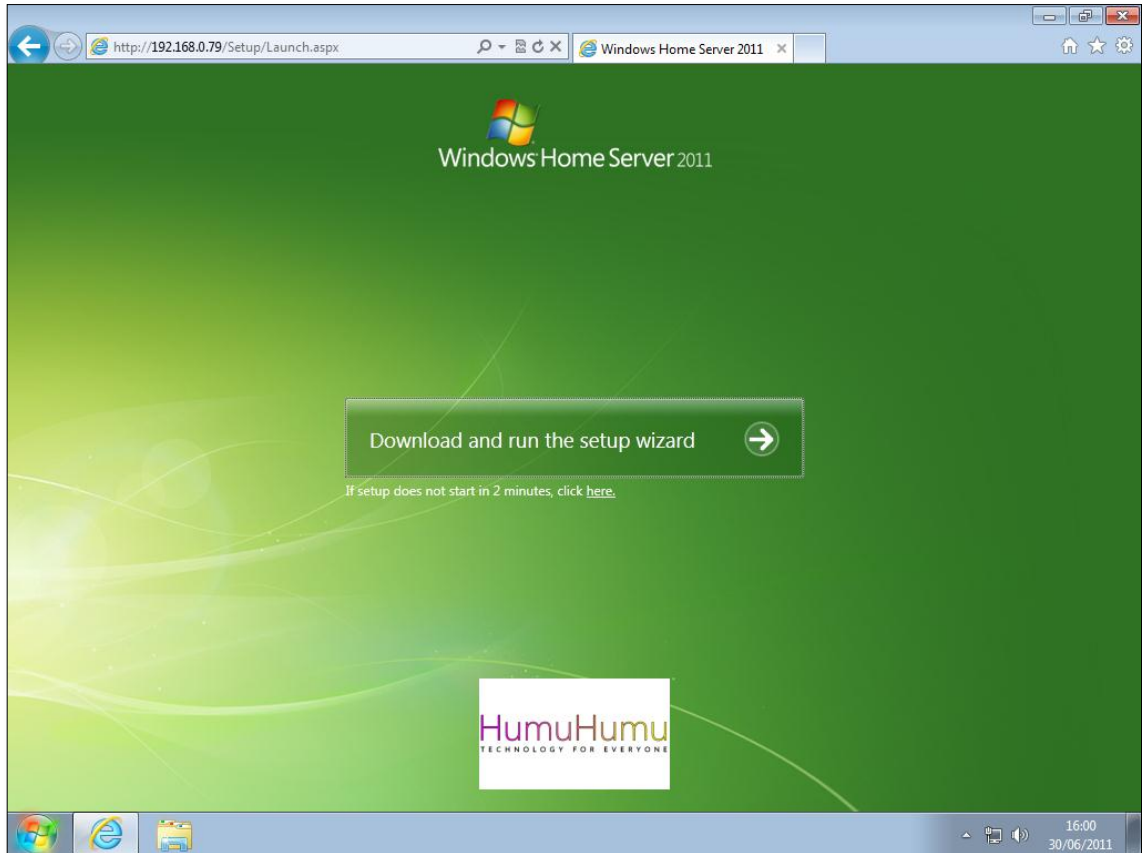
4) The Home Server will take approximately 15 minutes to power on and start up.

First time access via webpage

- 1) Our Home Server products are designed to be used without a keyboard or mouse. To access the Home Server load up your web browser on your PC or laptop and go to the following website:

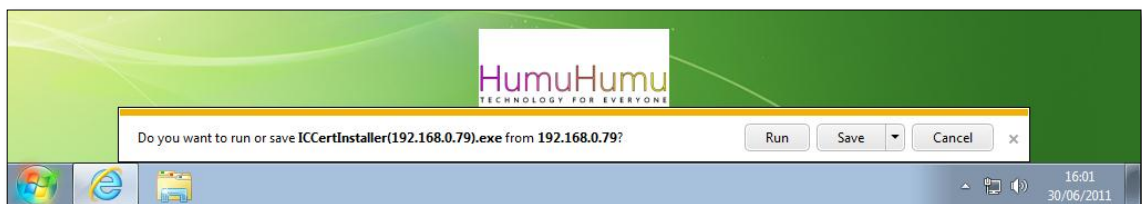
<http://server/connect>

You will be presented with the following screen. Click on the “Download and run the setup wizard” button.



Picture 1 – Download and run the setup wizard

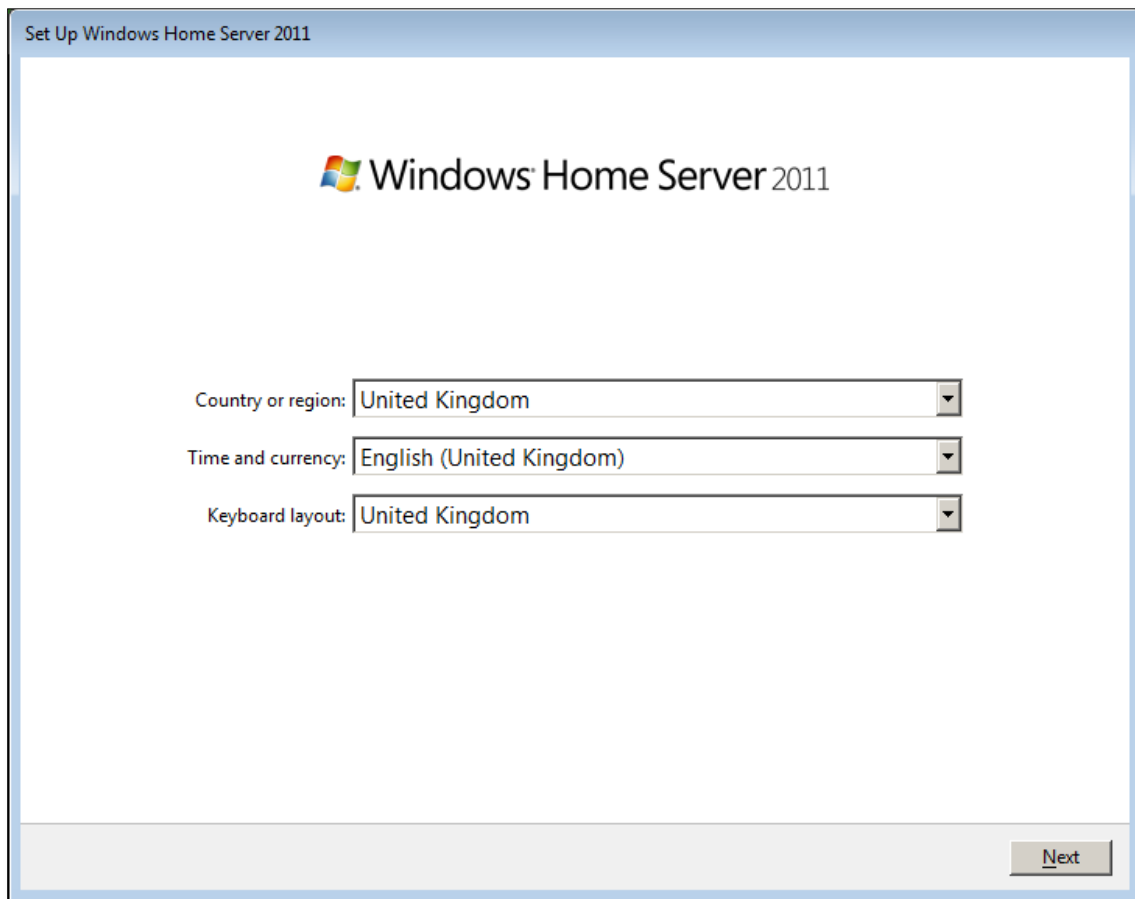
You may be prompted to run or save the wizard applet. You need to choose “run”. The applet will run and display the first setup screen.



Picture 2 – Answer “Run” if prompted

Keyboard and country settings

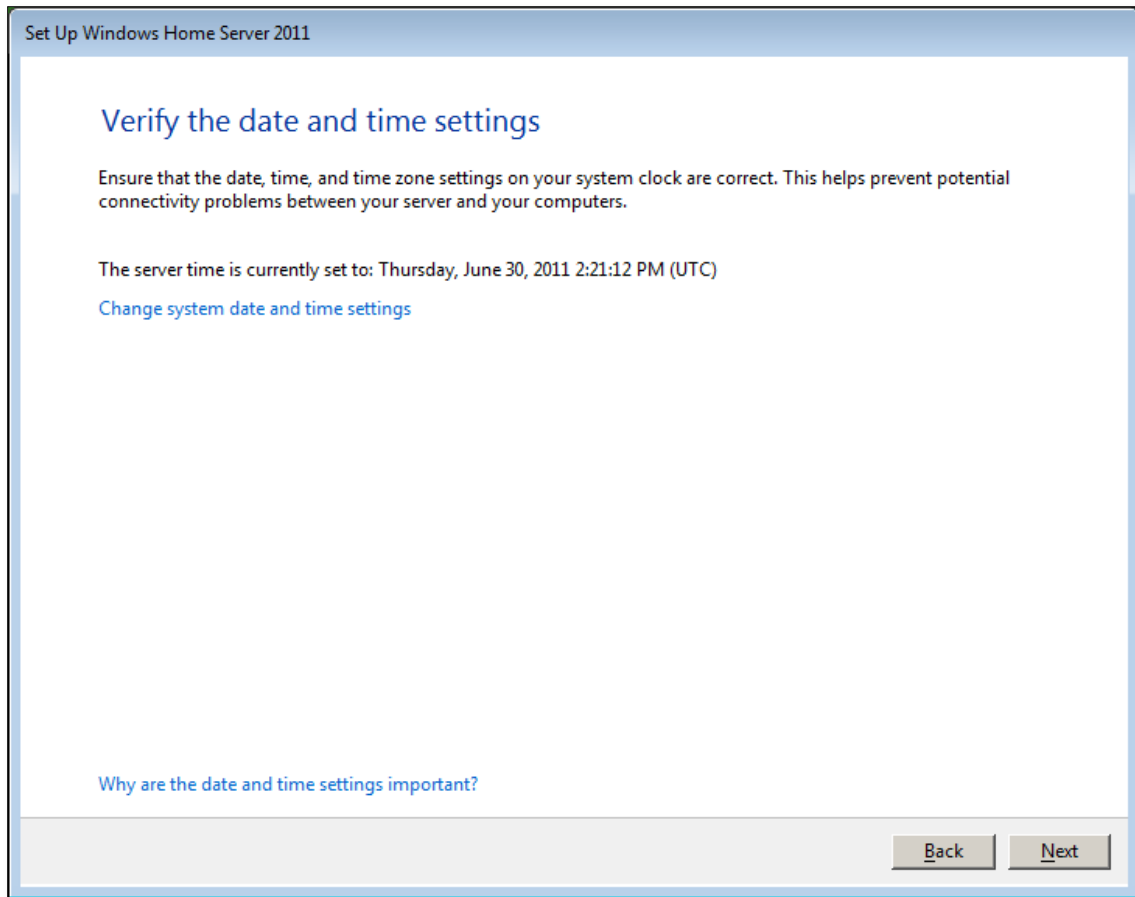
Choose the correct country, time and keyboard settings. For UK users this would be United Kingdom. Once completed, click the Next button.



Picture 3 – Keyboard and country settings

Verify date and time

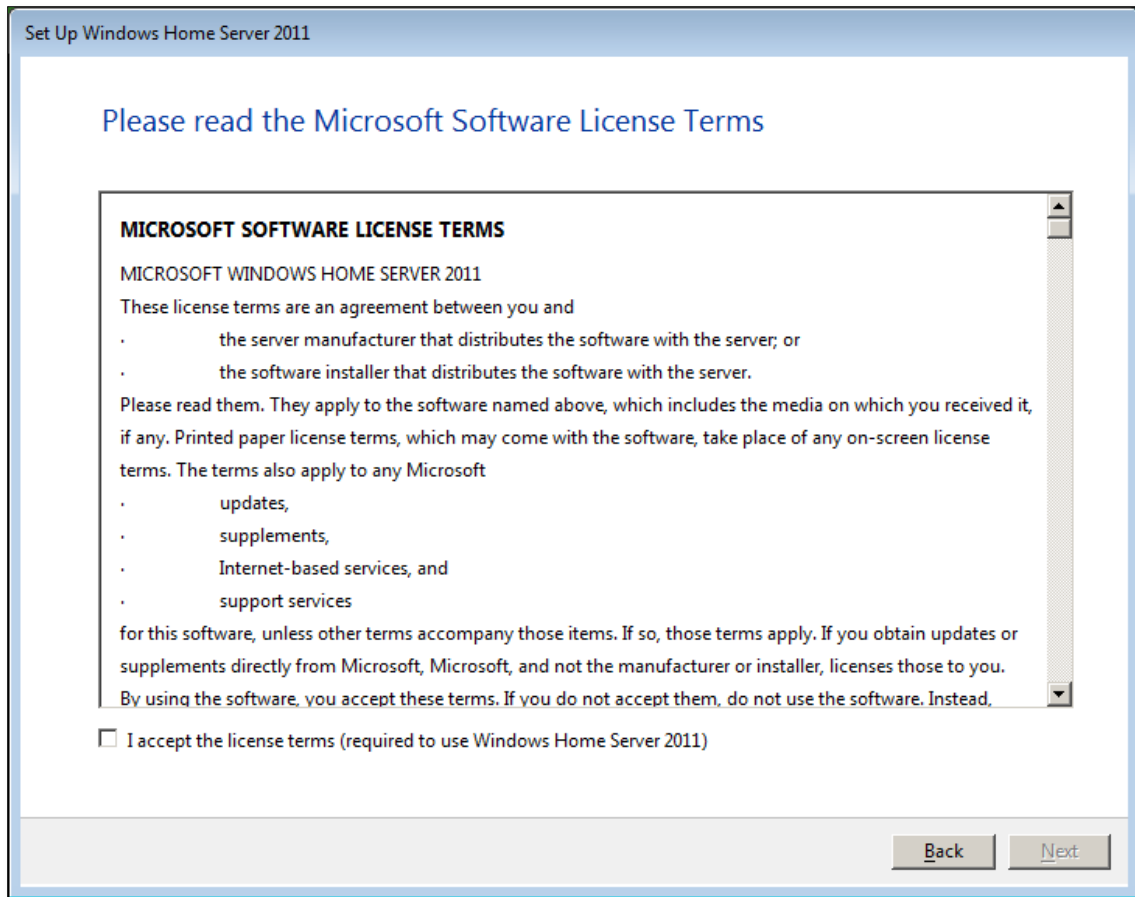
Make sure the date and time are correct. Incorrect settings could stop your Home Server from working correctly. Once completed, click the Next button.



Picture 4 – Set correct date and time – Important!!

Microsoft Software License Terms

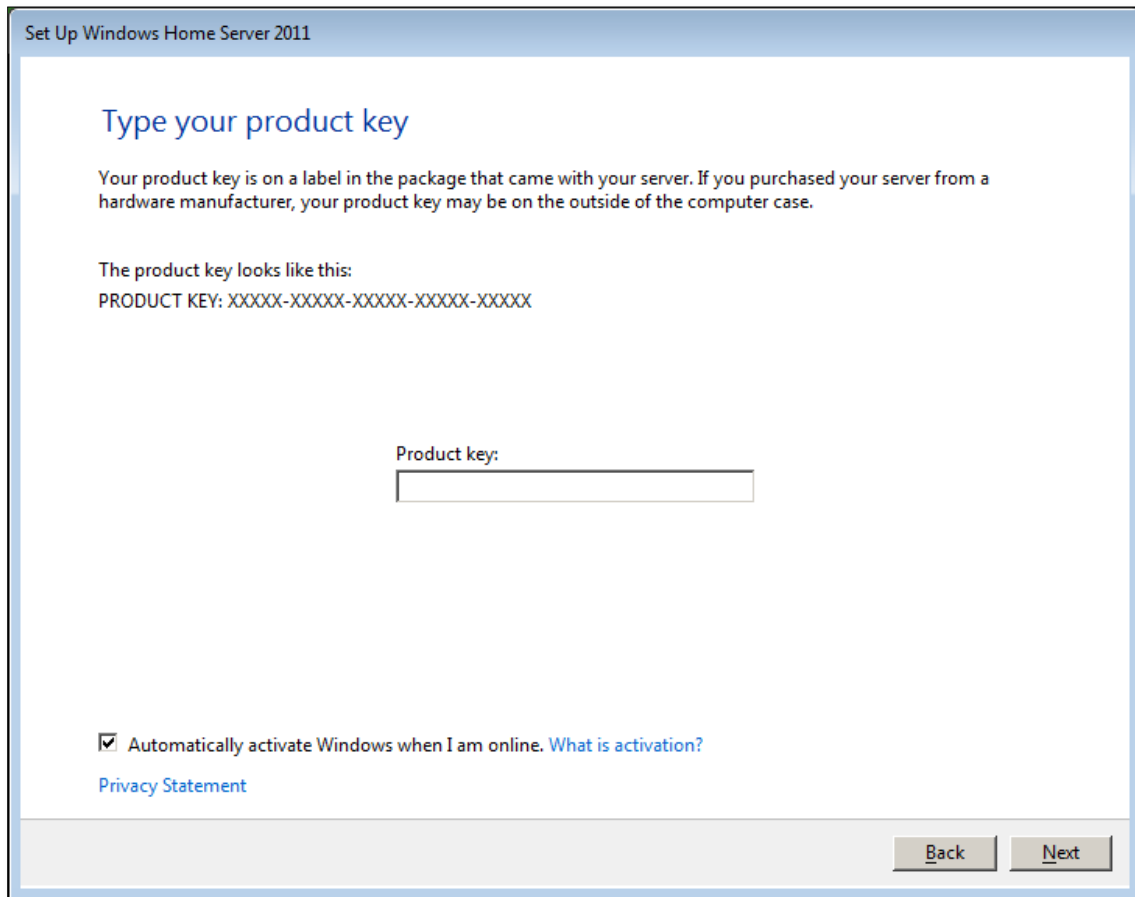
Please read the software license terms. Click the acceptance box and then click the Next button.



Picture 5 – Agree to the Microsoft License

Product Key

Your product key is located underneath your Home Server. Make a note of the product key number and type this into the box. Once completed, click the Next button.



Picture 6 – Type in product key – located under the Home Server

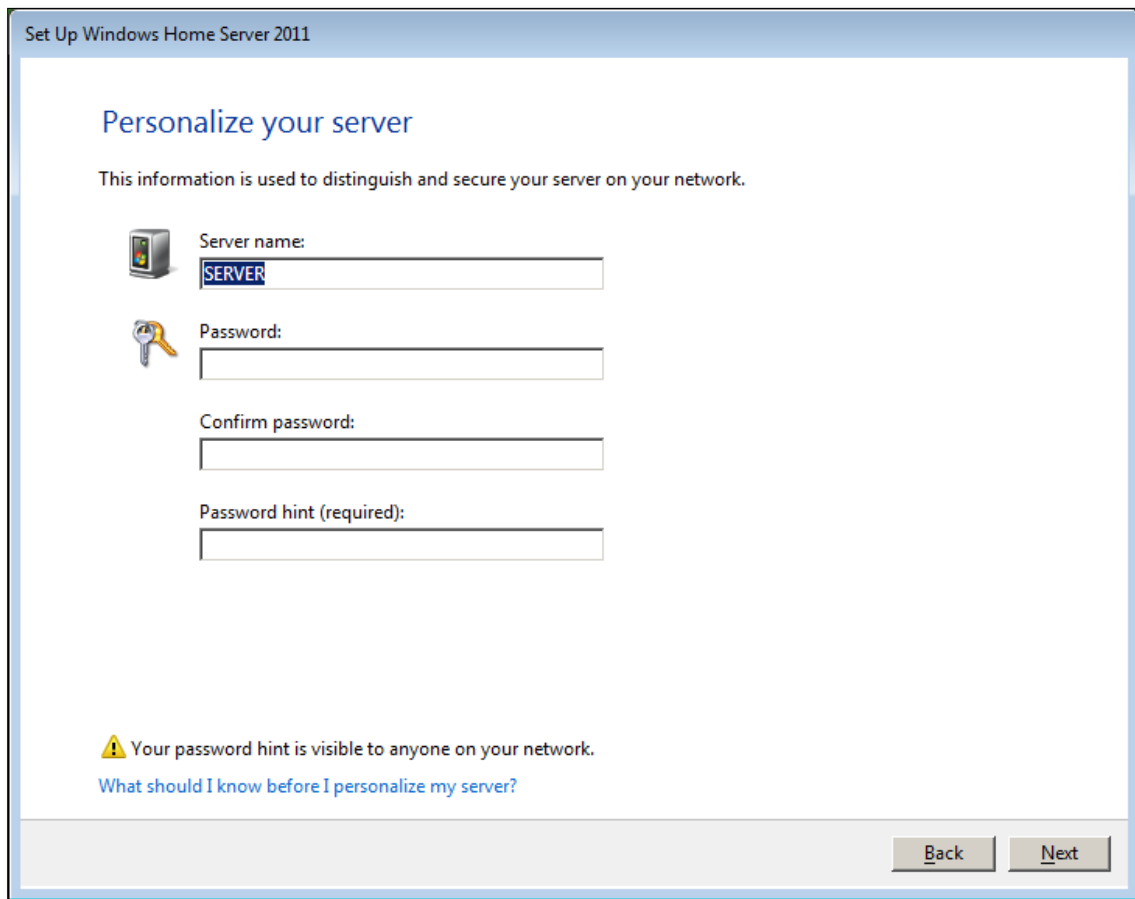
Use the space below to write down your product key.

Product Key:

Personalize your Server

You need to choose a server name. The server name can be up to 15 characters in length. The password needs to be at least 8 characters and must contain uppercase letters and numbers.

Don't forget your password. We suggest you make note of it in a secure location. The password hint can help you remember what your password might be. For instance you may choose a password "Sydney2000" and the password hint could be "Millennium Vacation". Once completed, click the Next button.



The screenshot shows a window titled "Set Up Windows Home Server 2011" with the subtitle "Personalize your server". Below the subtitle is the instruction: "This information is used to distinguish and secure your server on your network." There are four input fields: "Server name:" with a server icon and the text "SERVER" entered; "Password:" with a key icon; "Confirm password:"; and "Password hint (required):". A warning icon and text state: "⚠ Your password hint is visible to anyone on your network." Below this is a link: "What should I know before I personalize my server?". At the bottom right are "Back" and "Next" buttons.

Picture 7 – Choose Home Server name and password.

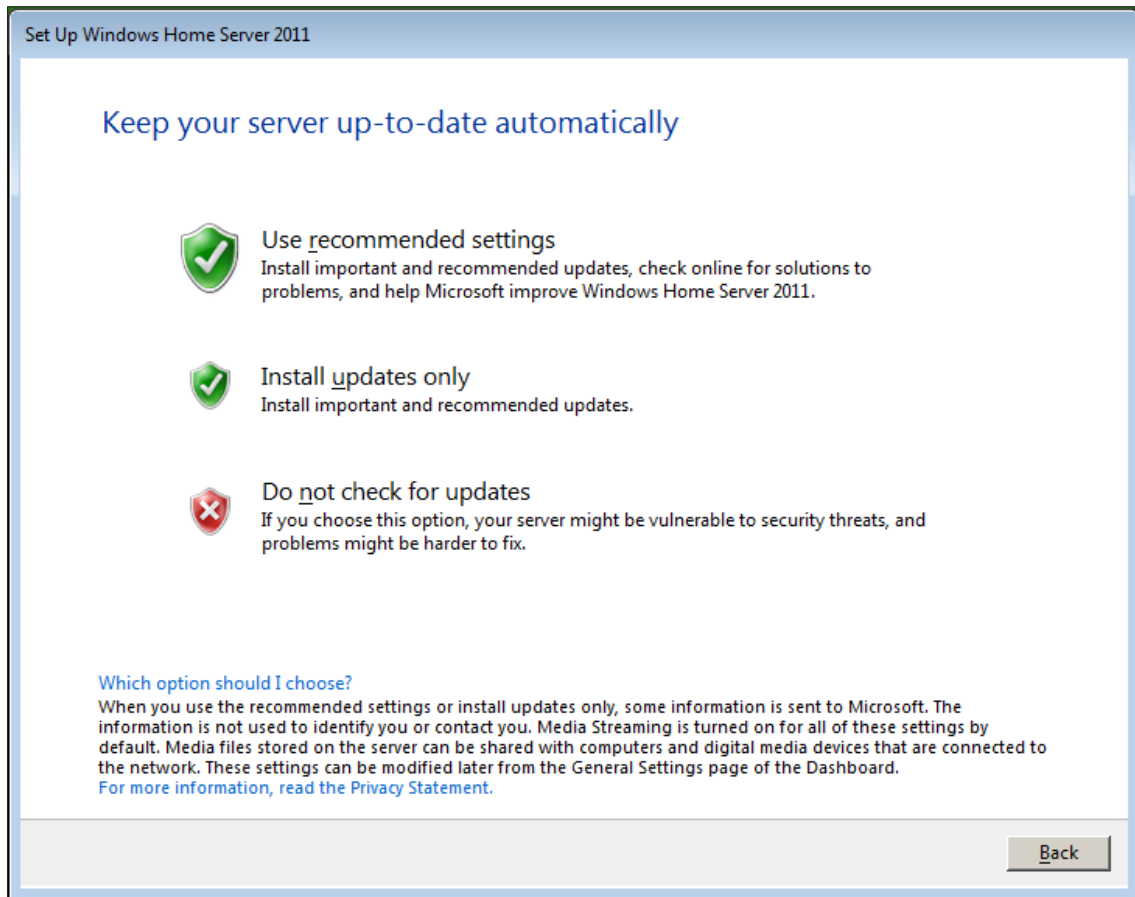
Use the space below to write down your server name and password. Make sure that you keep this document in a secure place if you do choose to write your password down.

Server Name:

Password:

Update your server automatically

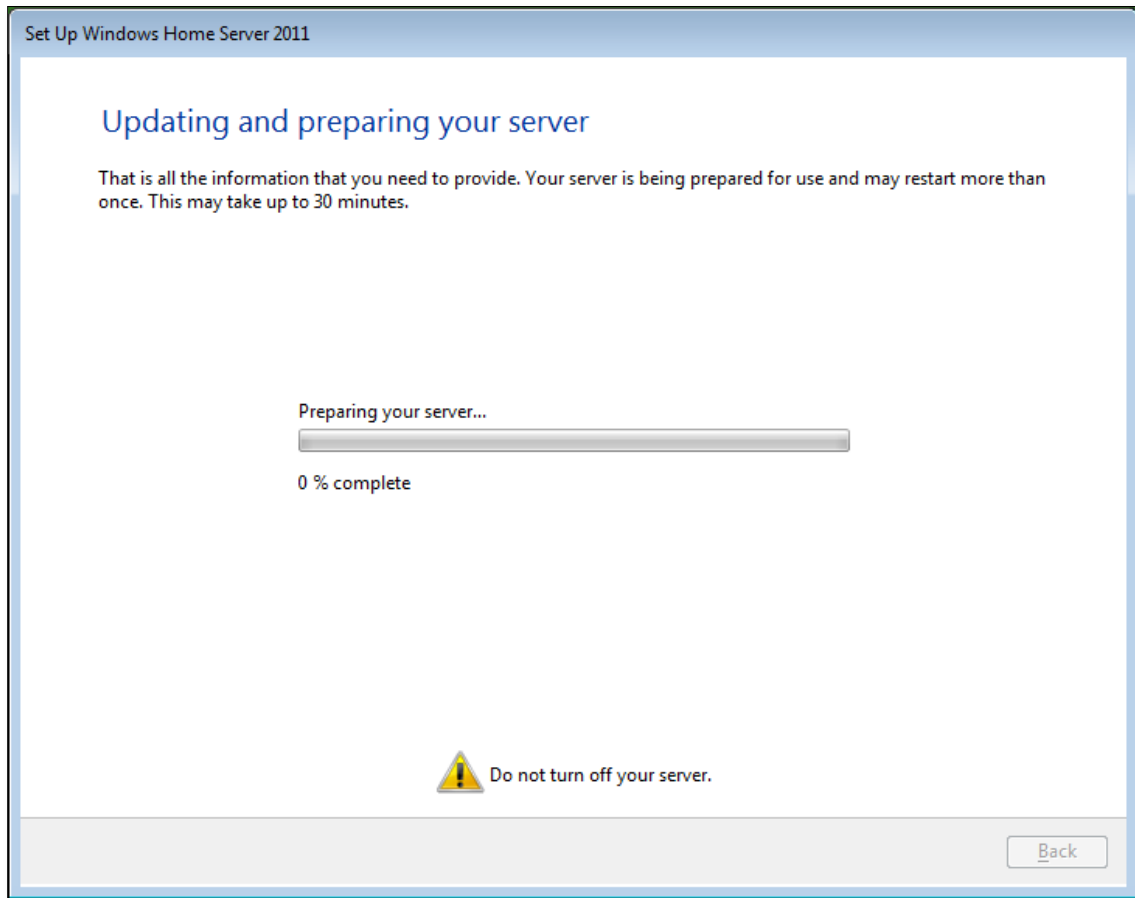
We highly recommend that you choose “Use recommended settings”. This ensures your server always receives the latest updates when they are released from Microsoft. Once completed, click the Next button.



Picture 8 – Choose software update and protection

Updating and preparing your server

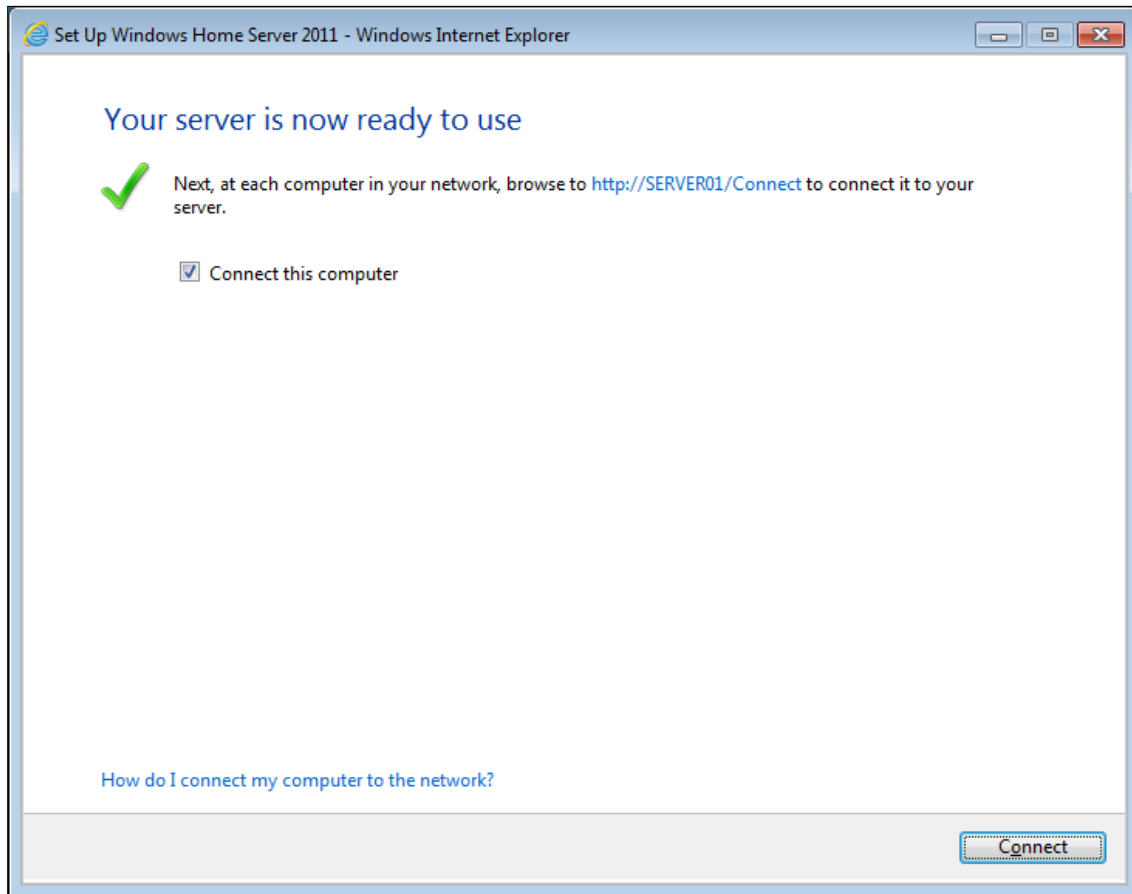
Once you have filled in the previous screens, the server will continue to install the software with your custom settings. This process will take approximately 10 minutes. During this time, please keep your browser window open so that you can monitor the progress. The server will automatically restart a number of times before it's finished.



Picture 9 – Preparing your server

Connecting to your home server

The screen below will be displayed once you are ready to connect your first PC to the Home Server. Click on the connect button and follow the on screen wizard. The wizard installs the Windows Home Server Connector software on your home computer and joins it to the server. Your Home Server will then automatically back up your home computer, monitor its health, and enable you to configure and to remotely administer the Home Server from your home computer.



Picture 10 – Connecting to your Home Server

Factory Reset

Should there ever be a software problem with your Home Server that stops it from working, you can use the supplied USB memory stick (labeled WHS 2011 OS Recovery) to recover your server.

IMPORTANT

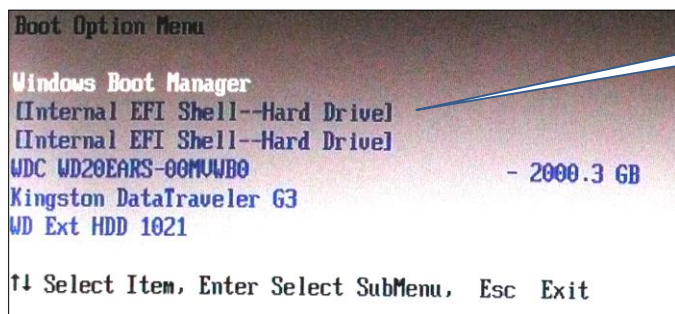
If you perform the factory reset and don't have an existing server backup, **ALL EXISTING DATA ON THE HARD DRIVES WILL BE DELETED**

Therefore, this factory reset should only be performed when you are sure you have a backup of your data. If you are not sure, please not do perform this procedure. Contact HumuHumu support first for assistance.

If you have purchased the optional external USB HDD drive, you can restore your server from the previous daily backup. If you do not have an external USB HDD drive, jump to the section below "Factory reset steps without external USB drive"

Factory reset with external USB drive

- 1) Remove all externally connected devices except for the USB HDD that you use for your daily backups.
- 2) Connect an external monitor, keyboard and mouse to the server
- 3) Insert your WHS 2011 OS Recovery memory stick into the front USB socket.
- 4) Power on your server and when the prompt appears on the screen, press the F10 key. You may find that there is a long pause between pressing your key and something happening. This is normal. The server checks all internal and external HDD before allow access to any system setups. A quick way to make sure the keyboard is ready to respond is to wait for the caps lock light to come on. When it does you can then press the F10 key.
- 5) The screen will now display a number of devices that you can start your server from. You need to choose "Internal EFI Shell—Hard Drive". You may have 2 items showing. You need to choose the first one.

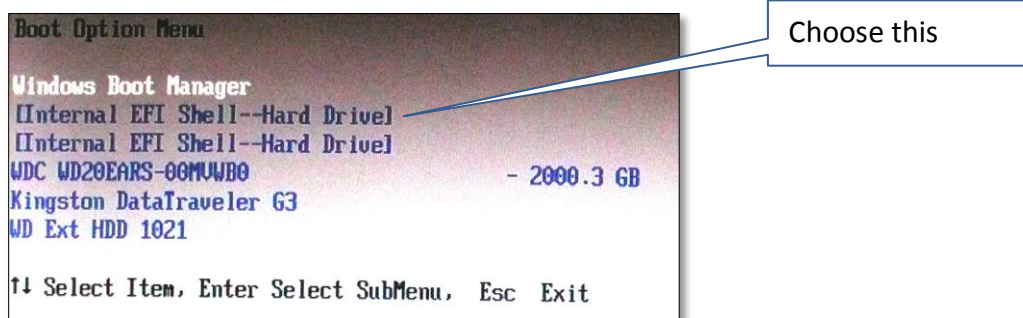


Choose this

- 6) After a few minutes you will be presented with the Windows Home Server setup screen. Since you will be perform a data recovery from your USB hard disk, you need to choose the **“Repair an existing installation”**
- 7) Follow the on screen instructions to recover your server from a previous backup.

Factory reset without external USB drive

- 1) Remove all externally connected devices like printers and USB drives.
- 2) Connect an external monitor, keyboard and mouse to the server.
- 3) Insert your WHS 2011 OS Recovery memory stick into the front USB socket.
- 4) Power on your server and when the prompt appears on the screen, press the F10 key.
- 5) The screen will now display a number of devices that you can start your server from. You need to choose “Internal EFI Shell—Hard Drive”. You may have 2 items showing. You need to choose the first one.



- 6) After a few minutes you will be presented with the Windows Home Server setup screen. Choose the **“New Installation”** option to install the Home Server.
Remember choosing this option will delete all data stored on the hard disk.
- 7) Follow the on screen instructions to rebuild your home server. This process will take approximately 40 minutes and the server will reboot a number of times. Leave your USB memory stick in the server whilst the installation takes place. Refer to pages 6 to 13 of this guide for explanation of options you will be presented with.
- 8) Once you have logged into your Home Server for the first time, load up explorer and browse to the USB drive. It is normally the E: Drive. Browse to the OEM folder and double click on the ApplyOEMSettings.cmd file. This will copy across some OEM software to your D: Drive and reset the screen resolution to the optimum settings. Once this has been done, your server is ready to use.

Further Help

Microsoft have provided online manuals at

<http://onlinehelp.microsoft.com/en-us/windowshomeserver2011>

Video tutorials are available at

<http://www.youtube.com/user/WindowsHomeSvr2011>

If you need any further help, please contact HumuHumu Support on 0845 519 8419
Monday – Friday (10.00am – 5.00pm) or email support@humuhumu.co.uk

AWIECO Products

HumuHumu are including 2 amazing software add-ins for Windows Home Server 2011. These are already preinstalled on your Home Server.

DriveInfo

The AWIECO DriveInfo is a free add-in for Windows Home Server 2011. The add-in integrates itself into the "Server Folders and Hard Drives" area of your Dashboard. It shows a graphical overview of your hard disks and drives inside the Dashboard.



The AWIECO DriveInfo also picks up all your standard shared folders and user created shares. It also reveals the usage of the drives as well as folders in a bar chart for every hard disk. Additionally to the shared folders, you have the possibility to see the usage of the backup drive. The total overview of your server storage is presented in a pie chart.

RemoteLauncher

The AWIECO RemoteLauncher add-in for Windows Home Server 2011 is a free and useful add-in, which gives you more administrative possibilities to manage your Home Server remotely.



If you need other tools and applications to run over the Dashboard, you can simply add them by a right mouse click. With this add-in, you can start applications installed on your Home Server and they will appear running on your client PC.

Resources

Public Resources

Windows Home Server blog:

For more up to date news about Windows Home Server, please visit Microsoft's Blog

<http://go.microsoft.com/fwlink/?LinkId=188746>

Windows Home Server public forums:

Microsoft provides public forums where other community members can assist you in resolving any issues.

<http://go.microsoft.com/fwlink/?LinkId=168988>

Installation Instructions:

For the most up to date installation instructions, please visit:

<http://go.microsoft.com/fwlink/?LinkId=189714>

For general help about Windows Home Server 2011:

<http://go.microsoft.com/fwlink/?LinkId=165674>

For the latest information on Windows Home Server, please visit the product web site at

<http://go.microsoft.com/fwlink/?LinkId=100260>

AWIECO software products:

<http://www.awieco.com>

Windows Home Server community websites:

There are lots of resources on the internet for Windows Home Server. Below are some of the best websites that HumuHumu recommends.

<http://usingwindowshomeserver.com>

<http://wegotserved.com>

<http://thedigitallifestyle.com>

<http://mswhs.com>

<http://www.homeservershow.com>

<http://homeserverland.com>